



6955 Union Park Center, Suite 500 | Cottonwood Heights, UT 84047 | 801-474-2274 | MuveRE.com

ATOMIC RANCH



It's the start of the new year and we aren't messing around. Our latest property located at 1880 E. 3825 S., affectionately called "Atomic Ranch" is definitely a step in the right direction. I'm not going to tease you at all on this one... it's an easy sell.

We've got lots of goodies on this house, including one level living, kidney shaped pool, classic (original) mid century modern fireplace, floor to ceiling windows, open floor plan, tandem garage, an original bathroom with existing tile in perfect condition and of course, in Muve tradition, a kick-ass master suite. Check out the Muve website for complete info. MuveRE.com



PRESORTED
STANDARD
U.S. POSTAGE
PAID
SLC, UT
PERMIT NO.234



Name
Address
City State, ZIP



@muve RealEstate
801-474-2274 | MuveRE.com

| 1st Quarter | 2013



Modern-Goth Remodel 2



Retro Restoration 3



Latest News 4



801-474-2274 | MuveRE.com

| We're trained professionals who have created a business of buying, renovating, and selling homes in various locations, condition and price ranges. | We help our community by improving the homes we purchase. | We build better neighborhoods by helping those who need good, safe housing. | We help potential home buyers find a house that they love and can truly call home. | We help home sellers sell their homes for top dollar in the quickest time frame possible. | We are Redefining Real Estate. |

FEATURED PROPERTY

1362 E. BROWNING AVE

We found this charming home in the coveted 15th & 15th area in Sugar House a few months ago. As we first stepped into this Browning Ave. charmer, we knew what was at stake. A high-end restoration in an older home. At first this seemed to be quite a daunting task, but lucky for us, we are Muve. We knew we could do it.

As you drive up this elegant Sugar House Avenue, our home stands out, amongst the best. A custom pergola has been fitted to a newly updated porch, along with traditional style pillars and shakes on the gables. Yes, it does feel like we are back in the early 1900's when this home was built, but let us assure you we have definitely **muve'd** this house up a few years...

Where should we begin? Brand new concrete driveway from curb to garage, new landscaping and sprinkling system, along with a fresh new coat of paint! Inside, our core component upgrades include a completely new HVAC system with new furnace and AC, new water heater, all new plumbing, and of course, an entirely new electrical system from the exterior panel and pole, to the high tech 30 year bulb life LED's we have installed (a new Muve signature touch). If we haven't sold you yet, it gets better.

continued on page 2



MISSION

OUR MISSION IS TO OFFER YOU INTEGRITY-BASED CUSTOMER SERVICE YOU CAN TRUST TO HELP YOU WITH YOUR PERSONAL REAL ESTATE NEEDS

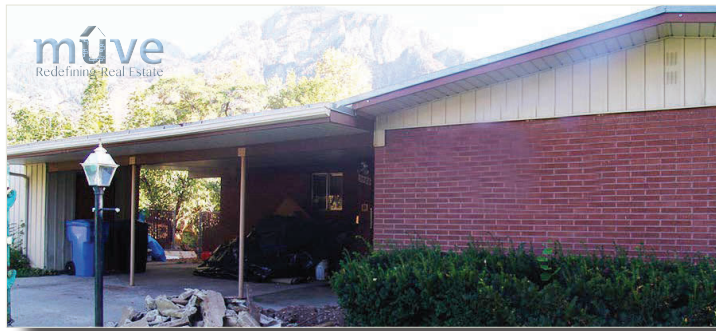
VISION

OUR VISION IS TO MAINTAIN A POSITIVE ROLE IN THE BETTERMENT OF THE COMMUNITY

VALUE

WE EMPHASIZE INTEGRITY, HONESTY & RESPECT IN EVERY TRANSACTION. THE VALUE OF WORKING WITH US IS BEYOND FINANCIAL-IT'S ETHICAL.

3586 E HERMES DR



The Muve team is becoming a player within the Mid-Century scene here in SLC. We have a few fantastic modern homes under our belt. With that said, we decided to change it up a bit with a gothic themed modern home. As a new personal favorite of ours, we are pleased to unveil the highly sought after, Hermes Dr.

The front of this house pretty much sums up what you should expect on the inside. Horizontal wood fencing runs the perimeter of this one-of-a-kind front courtyard. This is just one of the many jaw dropping entertaining spaces we have incorporated into this home. Views of Mt. Olympus can be clearly seen as you sit next to an enormous concrete gas fire pit. We have fit the front gable with the same wood material as the front fence, an excellent accent to the home. An exposed steel I-beam spans the length of the carport.

When you open the front door, your heart will begin to beat heavily, gazing straight into a playground for your senses. Floor to ceiling glass windows run the length of the dining/family room. A heavily wooded backyard is the scene. The smell of freshly refinished dark oak floors and a cedar wood accent wall

is enough to make anyone smile. We have again incorporated the original wrap-around fireplace adding the Muve signature crushed glass burner. The kitchen features dark grey cabinets with beautiful Caesar Stone Quartz counters.

We wanted to incorporate a huge master suite into this property, so we blew out a wall and combined two very large bedrooms. The result is breathtaking. This master bedroom features original hardwood floors, floor to ceiling windows, and most importantly, the master bathroom and walk-in closet. A separate tub and shower fill the spacious area, along with double sinks, and one of a kind vanity lights. The closet features hardwood floors, a private washer/dryer, and has been left as a clean pallet for you to customize.

The entire home has been upgraded with new plumbing, electrical, and again our signature LED lighting. This home is one-of-a-kind, and won't last long. We will be sad to see it **muve** on to the new owner. We just hope they will invite us over to enjoy this masterpiece.

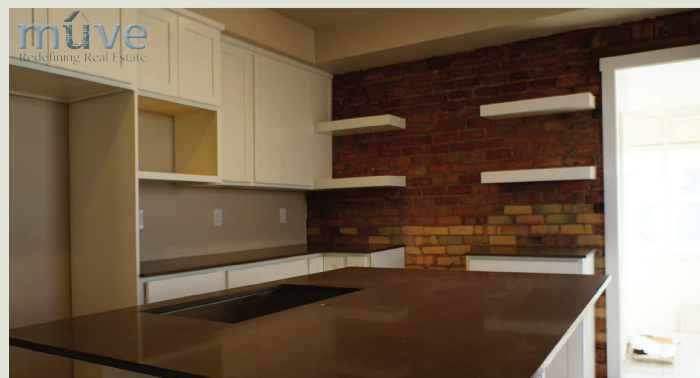
Bathub Countertop Cabinet Sink Tile Refinishing
 Mike Maddocks/Owner
 tubdoctorutah@gmail.com
THE TUB DOCTOR
 801.792.9017
 897 W. 100 N. #C N. Salt Lake, UT 84054 www.tubdoctor.net

continued from page 1

FEATURED PROPERTY

We have removed a wall in the dining area, opening the spacious kitchen into an entertainer's dream. All new white shaker cabinets have been fitted with Caesar Stone Quartz counters that will make anyone want to cook a feast! We have carefully extracted the existing lath and plaster on the main kitchen wall to expose the original brick exterior of the home. Cleaned and sealed, this is a phenomenal feature that we have equipped with a stainless steel range hood and floating shelving. You will definitely be spending a lot of time in here.

Original hardwood floors have been preserved (would you expect any less?) and carry into the bedrooms. We pushed a wall back to make room for a big walk-in closet in the master, the perfect



place for you to store your fashionable shoe collection. All new tile, doors, base, case, fixture hardware and lighting have been installed in the home.

As you make your way into the mud/laundry room, you find a brand new 1/2 bathroom with a beautiful pedestal sink! Re-configuring the basement was a must. We wanted to ensure that this basement had a fresh new spacious feeling, and the typical Sugar House basement did not meet our standards. We have completely re-configured this space with two new bedrooms, a family room, and a brand new bathroom.

This beautiful home screams that original 15th and 15th feel we all love. You truly feel at home in every room!

2790 E. JUNIPER DRIVE

Located in the heart of Holladay lies an incredible restored Muve modern home. This project highlights the new Muve style and attention to detail in our homes. We have dubbed this property our "Retro Restoration" for a few reasons. Once upon a time this property had overgrown landscaping that hid the entire front of the home. It also had a pitched roof. We were going for a specific look, so we made some serious changes. For starters, we leveled the front yard and started from scratch. The home now features a secluded front courtyard, bordered by horizontal wood fencing, fresh sod and a metal flower box with Mexican pebbles. There is also a pri-



vate master patio, deck mounted fire bowl, and the biggest change of all, the flat roof! Yes that's right, we muve'd that 46,000 pound pitched roof right into the dumpster and fitted the home with a new TPO membrane surface weighing in at a mind blowing 1,400 pounds. Wow, talk about taking some weight off this place and bringing it back to life!

When you step inside, the attention to detail is remarkable. Caution, when you walk through the front door, you may pass out from what you see. Your mind will begin to race as it tries to keep up with everything. Exposed beam skylight, wood accent wall, dark walnut stained floors, concrete floor tiles, floor to ceiling windows, glass fireplace burner, and a stainless

steel & glass handrail. Hold on to the handrail or you might fall down with excitement.

As you work your way into the kitchen, you can see dark walnut cabinetry with Caesar Stone quartz counter tops. A stellar glass range hood accents the large waterfall island effortlessly and is also very functional. A counter to ceiling wall of tile features exposed stainless steel shelving for all of your pristine glassware needs.

In the master bedroom, you can observe the Muve style. Hardwood flooring has been preserved throughout and a wall has been **muve'd** to make way for an enormous master bedroom and walk-in closet. Yes, there is hardwood in the closet too! The master bathroom is spectacular. A separate tub features wall tile that expands to the ceiling, with a wall mounted faucet. An enormous master shower, featuring dual shower heads, euro glass, and exotic shower floor tile will be the perfect place to clean up after a long day on the slopes!

We would go into more detail here, but we must leave some surprises as you come see this place in person!

MUVE IS NOT ONLY A LEADER IN THE SALT LAKE REAL ESTATE INVESTING SCENE; WE HAVE A POWERHOUSE TEAM OF HIGHLY TRAINED REAL ESTATE AGENTS.

We have helped hundreds of buyers and sellers in regular real estate transactions across Salt Lake County. Our team takes the time to ensure your transaction is as smooth as silk. We take pride in customer service and building client relationships that last a lifetime. Let the Muve team represent you on your next real estate transaction and find out why our clients love what we do.



AMERICAN GRANITE KITCHENS
 HIGH QUALITY AT LOW PRICES
 The solution for all your stone needs from natural to man-made, We can also supply you with sinks!
 One call you will solve all your countertop needs!
 Chris Adams: 801-598-2990
 Rosbitt: 801-910-8842

When Quality Matters
MCC
 Mike's Custom Construction LLC
 801-870-9744
 Expert in all Types of Roofing, from Repairs to Full Re-roofs
 Licensed and Insured
 Free Estimates

TAILORED LANDSCAPING SERVICES

 Get that Tailored Touch | Hardworking and Punctual | Call for Quotes & Services
Zach - 801-935-1618